

Inside this issue

Varden Downer moves on pg....4



Jamaica Day (NWA) ... pgs 6 & 7



The battle between the 'X' and 'Christ' ...pg 9



New round of Patching ... pg 12



2008 Flash Back... pgs 3 & 13



BON VOYAGE MRS. NEITA



Mrs. Lois Elaine Neita says "Goodbye" after serving for 52 years in the civil service. She will be greatly missed by both her immediate staff and the rest of the NWA family. Seen presenting her with a framed citation on behalf of the Finance Department is Ms Sameira Christian. The presentation took place at a farewell function held in her honour on December 11, 2008.

Flashback - 2008



New Advisory Board in place - March 2008



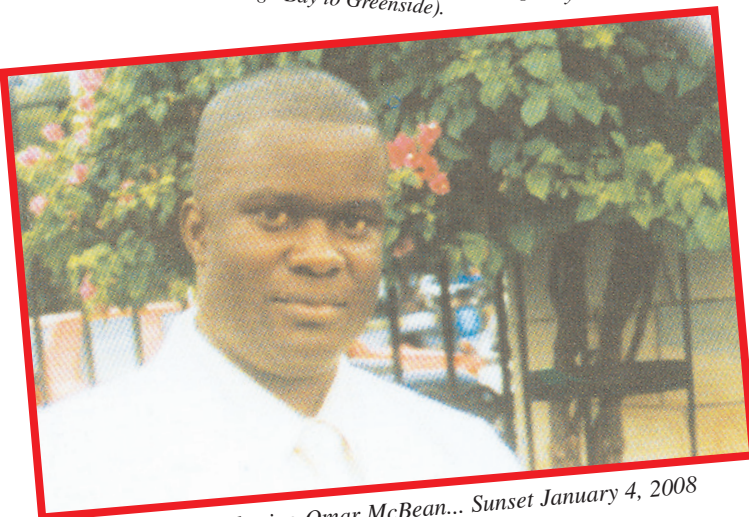
Library Week 2008



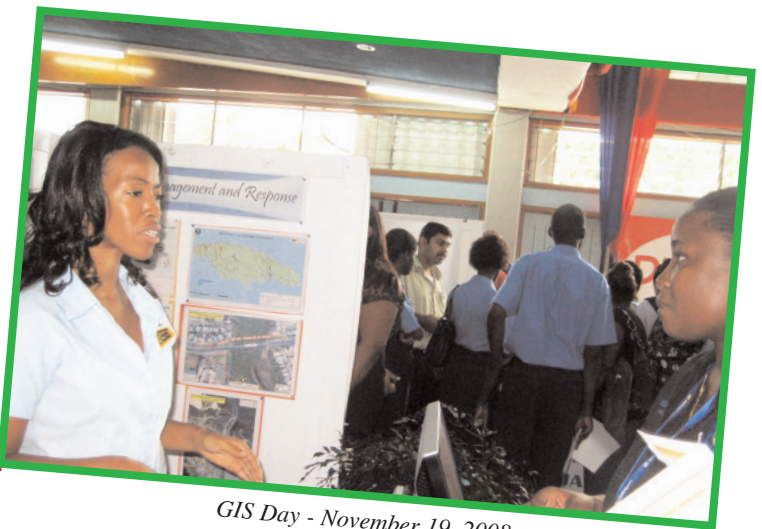
Official opening of Segment 2A of the Northern Coastal Highway Improvement Project (Montego Bay to Greenside).



Islandwide Mitigation, 2008



Remembering Omar McBean... Sunset January 4, 2008



GIS Day - November 19, 2008

Lois Elaine Neita

There are those among us who serve beyond the spectrum of greatness. Success is not simply brought about by due diligence. A positive attitude and a passion for the non-acceptance of mediocrity are important elements needed as well. Over the years we have seen that there have been those in positions of authority who have crumbled as a result of the stress from their positions and or the debilitating pressures of life. Lois Elaine Neita is one individual who has successfully managed to fuse the essentials of a great career and personal life into one holistic package. A woman, whose competence needs no question and whose debonair mannerism and sometimes unyielding stance are well respected. "She is an excellent boss. A very kind and considerate person, who is firm when she needs to be and always demands the best from her team members," said Sharon Mayne who has worked closely with Mrs. Neita for over 12 years.

Elaine or Mrs. Neita as she is widely known is a product of hard work and humility. She joined the civil Service in July of 1956 at the Board of Supervision, a body, which was in charge of poor relief, under the Ministry of Labour. Her journey thorough the Public Service took her to the Ministry of Housing in 1967 where she worked firstly in the Construction Department of that Ministry and later in the Accounts Department. During this tenure she rose to the level of Director of Finance (Housing Fund). In the 1980's she was appointed to, and served on, the Boards of the National Housing Trust (NHT), The Jamaica Mortgage Bank, as well as Caribbean Housing Corporation, (Now NHDC). Mrs. Neita's appointment to the Board of the Housing Corporation came when the Ministry of Housing transferred to the Corporation, the management of all of its mortgage accounts that it previously held in the Ministry. She was able to give valuable advice to the Board during this transition period.

In 1993 with the changes in portfolio Ministries that resulted in the merger of the Housing and the Works Ministries, Mrs. Neita was transferred to the 140 Maxfield Avenue office of the Ministry of Construction as Senior Director of Finance and Accounts. She continued to excel in her chosen field and was nationally recognized in 1997, when she was awarded the Order of Distinction (OD) for excellence in the field of Public Service. That same year, Mrs. Neita retired. Her retirement was however short-lived, as before the year ended she was requested to return to the government service. This time it was to head the Capital Accounting Unit of the then Ministry of Local Government and Works. She again took up the challenge. This Unit, which was set up as a precursor to the National Works Agency had responsibility for the merging of the Ministry's diverse Capital Accounting Units into a single entity.

Mrs. Neita's diverse experience and diligence were put to good effect during the transitional phase of what was to become the National Works Agency in 2001. She had responsibility for developing and implementing the structure for the Agency's Accounting Department. She has since that time diligently and meticulously



served as Director for the Finance and Accounts Department. "Mrs. Neita possesses an appetite for excellent performance. She does not entertain shoddy work from her staff and or herself. She ensures that her standard of work can withstand the keenest scrutiny," said Manager, Financial Accounts, Pauline Dunstan.

Mrs. Neita is seen by some team members, as firm guardian of government policies and regulations. Director of Planning and Research, Patrick Rose, himself a long serving public servant, however believes that her resolute stance has been an enabler in the efficient running of the Accounts Department. "There are those who might have misinterpreted her firm stance as it relates to respecting government policies and regulations as being too stringent. However, those who might have laboured under any such belief have come to appreciate the fierce tenacity of her approach," he said.

Mr. Rose added that Mrs. Neita has always had the interest of the Agency in sharp focus and that her drive to serve has not weakened and is particularly reflected in the fact that she has continued to lend her time and expertise to the organization even though she could have been enjoying the fruits of her retirement.

cont on page 8

VARDEN DOWNER *moves on*

Varden Downer joined the staff of the National Works Agency in July 2001 as a civil engineer. He was assigned to the Directorate of Regional Implementation and given responsibility to coordinate an islandwide Major Patching Programme that was implemented that year. Following the successful completion of this assignment Varden was assigned new challenges. In 2002 October he was transferred to the Directorate of Major Projects as a Projects Manager.

During that year he joined the Northern Jamaica Development Project (NJDP) as the Project Managing Engineer for Segment III. Segment III was to see the reconstruction of the 96 kilometre section of roadway between Ocho Rios in St. Ann and Port Antonio in Portland. This new assignment was his focus and the sum total of his engagement until his departure in November 2008. Varden became deeply involved in the activities of the NJDP and immersed himself in every aspect of plans for Segment III.

He worked with the NJDP team to secure approval of the funding for Segment III of the Northern Coastal Highway Improvement Project (NCHIP) from the European Commission (EC). Varden was exemplary in his dedication and hard work to meet the criteria established by the EC in order that loan funds would be released for financing the project.

The criteria included:

- Acquisition of more than 1200 parcels of land to facilitate road re-alignment.
- Relocation of hundreds of utility poles.
- Removal of hundreds of illegal structures located within the area designated for reconstruction of the

roadway and

- The resettlement of some citizens who were affected by the reconstruction works.

Mr. Downer was also a member of the negotiating team charged with the responsibility of negotiating a Works Contract with the road contractor, E. Pihl and Sons. In fact he acted as the Secretary and Recorder of the team and produced reports which were of exceptional quality. These reports form part of the documentation that is embodied in the current Works Contract.

Varden adapted quickly to the NJDP style of managing contracts.

It relies heavily on using the contract document and related instruments to ensure that intended works are done to specification and contractor's claims are minimised.

Mr. Downer's strengths was his zeal to be the best project manager in the NJDP, and in the end to be considered among the best project managers in the Agency. He served the Unit very well and established himself as a marketable engineer.

His best moment as Project Managing Engineer for Segment III was the consensus arrived at by all parties, Contractor, Contracting Authority and Consultant that the substantial completion of Segment III of the NCHIP will occur prior to June 2009. We believe however, that the incidents surrounding the construction and ultimate demolition of the Otrum Bridge II, in Port Maria, St. Mary will remain one of his greatest challenges to date, as a professional.

The NJDP and the NWA acknowledge Varden's outstanding contribution to the fulfilling of our mandate and wish for him and his family all the best for the future.



Varden is all smiles after opening his gift of a Blackberry cell phone

New and Improved corridor for the *Bogue Main Road in St. James*

"Before the start of next year's tourist season...you'll have your new roadway." This was the assurance given to an appreciative audience by Minister of Transport and Works, the Hon. Mike Henry, at a recently concluded contract signing ceremony for Segment 1A of the Northern Coastal Highway Improvement Project (NCHIP).

The Segment 1A contract which is valued at just under J\$1.4 billion was signed between the Ministry of Transport and Works and the ISO 9000 certified contracting firm, Surrey Paving and Aggregates Ltd., on Thursday November 13, 2008 at the western regional Office of the Prime Minister, in Montego Bay St. James.

The ISO 9000 standard which is more formerly referred to as ISO 9001:2000 is an international standard of quality that defines the minimum requirements for a company's Quality Management System (QMS). This system consists of the organizations policies, procedures and other international requirements which are geared towards ensuring that all customer requirements are consistently met. The ISO is maintained by the International Organization for Standardization (ISO) and is administered by accreditation and certification bodies. To receive an ISO 9000 certification an organization must put the required QMS processes and controls in place, monitor performance of its processes and demonstrate continual improvement. The ISO 9000 certification must be maintained through regular audits, annually or biannually, conducted by the selected registrar.

Segment 1A involves the much anticipated widening of the Bogue main road in Montego Bay St. James. The corridor, which is a major entrance point to the city of Montego Bay for persons travelling from the direction of Reading, has been the source of traffic delay during the morning and afternoon peak hours. This has resulted in a reduction of productivity and has met the ire of many motorists, tourism and other interests in and around the second city.

Michael Saunderson, the National Works



(From left) Horace Cotterell, Major Projects Manager of the NWA; Andrew Evans, Resident Engineer of Stanley Consultants Inc.; Alwin Hayles, Permanent Secretary in the Ministry of Transport and Works; Leslie Chang CEO of Surrey Paving and Aggregates Ltd.; Transport and Works Minister Mike Henry and Clive Mullings, Member of Parliament for West Central St. James and Minister of Energy sign contract documents for Segment 1A of the Northern Coastal Highway Improvement Project. In the foreground is Richard Solomon, Councillor for West Central St. James.

Agency's (NWA's) Intelligent Transportation System Specialist, says that the central Montego Bay business district is one of the largest commercial areas in Jamaica second only to downtown Kingston. He went on to explain that, "the area serves both commercial and residential needs with respect to goods and services. The environs of Montego have been steadily expanding over the last five years which includes major residential and commercial development. Increase development generates additional traffic demand. The road network did not keep pace with the additional development taking place and has resulted in traffic demand exceeding the current road and intersection capacity, hence congestion."

In response to this situation the government has embarked on a programme to widen the existing two lane corridor to accommodate four lanes of traffic with improved intersection designs and significant drainage improvements.

This project begins 300 metres west of the Reading intersection in Montego Bay and extends 300 metres west of the Fairfield intersection in St. James. The project also includes the reconstruction of 1.5 km of roadway perpendicular to the Segment 1A of the highway, from the West Green round-a-bout, along the Fairfield main road and extending to the Granville intersection.

In addition, a bridge will be constructed adjacent to the existing bridge which spans

the Montego River. The existing bridge is to be rehabilitated and maintained to serve two lanes of traffic while the new bridge is being constructed to serve the other two lanes.(omit)

Segment 1A of the NCHIP also involves the rehabilitation of six bridges which were constructed under Segment 1 of the NCHIP. This segment extends from the Bogue corner in St. James to the Negril round-a-bout in Westmoreland.

It is expected that the negative impact to the motoring public will be minimal during the period of Construction. Mr. Leslie Chang, Chief Executive Officer of Surrey Paving and Aggregates, says that his company is committed to minimizing the inconvenience to the public. He explains that the company will not be working during peak hours, and will utilize the night hours to carry out much of the work. He added that this project will be submitted for review by the ISO 9000 body and in this way will weigh heavily on the company to maintain its ISO 9000 certification.

Work on Segment 1A of the NCHIP is expected to get underway in January 2009 and has a project life of one year.

Segment 1A forms part of the Greater Montego Bay Traffic Plan. This involves the recently completed Rose Hall development (Segment 2A of the NCHIP), and the new Traffic Management system which is planned for downtown Montego Bay.

Jamaica Day (NWA)

The Training and Development Unit along with the Rewards and Recognition Corporate Office Committee hosted its Rewards and Recognition 3rd quarter Awards Programme under the theme "Jamaica Day at NWA, on Friday, October 17, 2008. This special event was inspired by our National Heroes Day which was

celebrated on Monday, October 20, 2008.

All members of staff in the spirit of patriotism wore black, green and gold. The Jamaican colours parading the NWA's compound permeated a sentiment of pride, as persons prepared to celebrate the work of our Heroes that weekend.



BREAKFAST JAMAICAN STYLE



Althea (Tia) and the rest of her crew from the NWA canteen whipped up some very tantalizing delicacies for breakfast. As you approached the canteen you could smell the aroma of hot chocolate, red herring, salt mackerel run down, steamed fish, callaloo and saltfish. You could also hear the fizzy oil frying stamp and go, dumpling, breadfruit and festi-

val. Mmm...yummy was the buzzing sound heard while persons dined at the Agency's canteen that morning.

JAMAICAN MEDICINAL HERBS AND OLD FASHION HOUSE WARES EXHIBITION



To enhance the essence of the event a display table was mounted showcasing medicinal bushes and old fashion house wares. It was an informative experience for many, as 25 different leaves (bushes) were exhibited. Did you know that 'shame o lady' relieves colds, chest pains, stomach pains when taken as a tea, and that it also treats gonorrhoea? The sap of the breadfruit tree can be used as a liver spot dressing, while periwinkle treats leukemia and other cancers, relieves diarrhoea, controls the flow of excessive menstruation, stops tooth ache when chewed and treats nervousness when taken as a tea. Note this! 'Love bush' relieves baby's gripes and backaches and corn silk treats kidney and liver problems. (Name tents were created showing the use and preparation methods of the various bushes).

The venue buzzed with excitement as folks reminisce on the good ole days of using the 'Home Sweet Home' lamp to study at nights and heating the iron on the coal pot to 'press mi uniform with 'ah lat 'ah pleats using corn starch'. The others listened keenly in eager anticipation to hear more and they did. The memory of 'shining' red oaked board floors with the coconut brush until you could see your face was also a 'blast from the past.' The viewing of the three foot pot, mortar and stick, coconut broom, coconut strainer, enamel cup, board tray, beeswax, nicol, tin cup, calabash and dandelion seeds also illuminated the faces of everyone. (Country life was nice - eh).

On special demand the display was transferred to the Library for an additional week.



THE REWARDS AND RECOGNITION PRESENTATION CEREMONY

The Rewards and Recognition Presentation ceremony was hosted by the urbane Michele Nesbeth, Manager-Training and Development Unit. The third quarter winner for the Corporate Region was Wendellene Wilson, Administrative Assistant Information Technology Unit (She had volunteered her services to work in the Emergency Operations Centre (EOC) during Tropical Storm Gustav. Ms. Wilson worked for 36 hours manning the critical aspect of the centre.

THE ENTERTAINMENT PACKAGE 'BACK TO AFRICA...'

It was talent galore as NWA staff presented poems and tributes to our National Heroes.

Mrs. Helen Pitterson, Manager, Legal Services recited the Jamaican National Heroes Song: Forever, Forward United.

A Tribute to our National Heroes, extracted from "The Story of the Jamaican People" by Philip Sherlock and Hazel Bennett, 1998, was done by Iolyn Donald, Manager, Office Management.

Laughter erupted as she also presented two poems by our own Louise Bennett "Not Even Little Twang" and "Back to Africa," which included Vallerie Brown-Whitter.

Our very own poet, Samira Christian, Administrative Assistant, Finance and Accounts, wrote and performed "To fi wi Heroes - A salute."

The function culminated with a bang, as attendees were surprised with goodies. Gifts in the form of five \$100 Digicel phone cards were placed under the seats at the venue. The last item on the programme was "One Love" by Bob Marley which was sang by the audience. Freshly baked cornbread, bread pudding and marble cake were served by the Training Unit and Office

Management. Approximately fifty (50) persons were in attendance.

What a way to start the National Heroes weekend. It will be an event to remember. Let us continue to play our part in making an effort to show our appreciation to those around us through the Rewards and Recognition programme. The recipients may not be recognized nationally, but according to Maslow (1943), "Recognizing achievements is an esteem motivator."



Wendellene Wilson, IT's Administrative Assistant accepts her trophy for Employee of the quarter from Christopher Campbell, Manager - Property and Estate.

cont from page 3

There is also another layer, beneath the strictness and no nonsense demeanor of this woman. She is perhaps one of the most genial characters you will ever meet and what is even more pleasing is the fact that she is able to match wits and engage in meaningful discourse with persons of any age or stratum. Her open door policy sees staff members being entertained, even while she is having lunch.

Manager of Management Accounts, Sandra Annansingh Grant describes Mrs. Neita as a sophisticated leader, who exercises her duty to motivate and encourage her staff by providing a flexible environment where staff can function comfortably as individuals.

Her strict, confident and genial persona apart, Mrs. Neita is seen as one of the most elegant women of the NWA. This is no coincidence, as another major achievement of this phenomenal woman was being crowned Miss Jamaica Mahagony in 1961. Then she won the competition as Lois Elaine Jones (maiden name). Mrs. Neita

has strong dedication to her family; she is wife of Attorney at Law, Mr. Clifton Neita (now deceased) and formerly of the Gleaner Company. She is the eldest of her three siblings for whom she has had direct responsibility, from very early in life.

As she opens another chapter of her life, a congratulatory note is being extended for the profound achievements she has made.

We also acknowledge the indelible impact her presence has etched on the Agency generally and on the accounts staff in particular.

She is indeed a phenomenal woman and we suspect, her passion to contribute to the development and maintenance of high standards at the work place and in life will perpetually linger.



Mrs. Neita and her staff at one of her many Birthday celebrations at the Office.

Big Waist Raises Risk of Early Death

LONDON, England (CNN) -- Having a big waistline can nearly double your risk of dying early, a major study has found.

The wide-scale study found that carrying excess fat around the middle increases the risk of early death, even in people not considered to be overweight.

Researchers from Imperial College London, the German Institute of Human Nutrition and other European institutions compared the waist sizes of participants with the same body mass index. They also calculated the ratio of their hip and waist measurements.

Body mass index (BMI) is a formula that expresses body weight in relation to height and is widely used to screen for weight problems. A BMI between 18.5 and 24.9 is considered normal for an adult.

VITAL SIGNS

The study in The New England Journal of Medicine found that an increase in waist circumference of about two inches raised the risk of death by 17 percent in men and 13 percent in women.

Large waists may lead to higher mortality risk because fatty tissue around the middle produces hormones and other compounds that can lead to the development of cardiovascular diseases and cancers, the study said.

The authors said a key finding of the research was uncovering the extent of the connection between distribution of body fat and risk of dying early, independent of BMI.

"Although smaller studies have suggested a link between mortality and waist size, we were surprised to see the waist size having such a powerful effect on people's health and premature death,"

Professor Elio Riboli from Imperial College London, one of the researchers, said in a statement.

"There aren't many simple individual characteristics that can increase a person's risk of premature death to this extent, independently from smoking and drinking," he said.

Findings from the study also supported earlier research linking higher BMIs to death.

Researchers did not focus on why some people develop bulging waistlines, but they said anyone with a large waist should increase their daily exercise, avoid drinking alcohol excessively and improve their diet.

They also said hip and waist measurements should be incorporated into routine health checks to identify individuals who may develop health problems. The study tracked nearly 360,000 participants for about 10 years.



The Battle Between "X" and "Christ": WHO IS WINNING?

by Samira Christian

Since the late 20th century, a new way for writing Christmas emerged. Instead of writing Christmas as is, some ingenious individual abbreviated the word and coined the expression X-Mas. The fanfare created by the word x-mas was unbelievable, especially since many thought that it was not a threat to the status quo. However, as we progressed with time, one realizes that the prefix "Christ" has to contend with the prefix "X" as to who should be affixed to the suffix "mas". You might see this as trivializing the essence of the subject matter, but if one carefully assesses this situation, you see the implication that this can have.

Traditionally, Christmas is a Christian Festival used to commemorate the birth of Lord and Saviour Jesus Christ. It has extended beyond this stereotypical purpose to embrace many things as well. Christmas is a time when family members, friends and colleagues gather to show how much they appreciate each other. It is usually the time of year, when giving is glorified and where individuals are called upon to reflect on the goodwill of mankind. Christmas Carols also reflect the joyful nature of the human persona, around this time of the year, especially among children, who usually wait earnestly for this festive occasion. In places like Jamaica, Christmas is synonymous with change, that is, citizens would make an utmost effort to give their places of habitation a facelift or upgrade themselves. This is the traditional notion of what Christmas ought to be and this notion is in fact inherent in the prefix itself "Christ".

However, it seems that people are becoming more and more nonchalant about the ideals and spirit of Christmas. Many a times, during the season, many are called to work overtime, an opportunity that is usually grasped with much urgency due to the economic environment. As a result, quality family time that would usually be spent with individuals that you love is slowly fading away. The world has witnessed a tragic evolution of mankind over the latter part of the millennium. The kind, generous disposition of man which was usually



noticed around the Christmas season, is now replaced with feelings of crudeness, crassness and stinginess. It seems to me that the whole essence of Christmas has lost its true meaning. It has become heavily commercialized and almost like a marketing tool used by many to simply make a profit. You might be asking yourself, so what has fuelled this? The answer I believed lie in "X-mas". When you replace the "Christ", which is essentially the traditional element of the season, you are in fact replacing the reason for the season. And when you affix "X", it is my opinion that symbolically you are leaving the floodgates open for people to impose a secularized approach to Christmas.

Just like others, I yearn for traditionalism to be brought back to Christmas. I long to see my brotherman assemble themselves, going out into the wider community and bestowing the blessings of the time upon the less fortunate. I crave for the calm nature that once characterized the season, not the deeply entrenched idea of commercialization that has saturated the poor souls of our people. Society is not a static creature and while "X" is proving to be a force of reckon with "Christ", "Christ" remains unchallengeable. Christ is the architect of life and therefore, it is really up to us to help return "Christ" to Christmas as we voluntarily participate in the celebration of the birth of our Lord and Saviour Jesus Christ.

INTER AMERICAN BANK EMERGENCY FUNDED PROJECTS

Periodic infrastructural damage to the island's road network has necessitated that the National Works Agency (NWA) identify measures to address these issues as they occur. The 2007 hurricane season resulted in considerable damage island-wide. Funding was secured through the Inter American Development Bank (IDB) to address the damaged infrastructure through a variety of projects. Projects being undertaken include the following.

ROSELLE - ST. THOMAS ROCK REVETMENT & RR WALLS

The Roselle main road in St. Thomas which was severely damaged during the passage of Hurricane Dean in 2007, is being rehabilitated at a cost of J\$ 78 million. The project which began in August 2008 involves the packing of stones along the shoreline, to prevent the waves from undermining the roadway. This design technique is referred to as Rock Revetment. The project also involves the construction of a retaining wall along a section of the roadway and the rehabilitation of sections of the roadway. The project which is being undertaken by the construction firm, M & M Jamaica Ltd. is expected to be completed by March 2009.

MUIRTON TO FAIR PROSPECT - PORTLAND ROCK REVETMENT & RR WALLS

The NWA has embarked on a J\$86.3 million rehabilitation programme along the Muirton to Fair Prospect main road in Portland. The shoreline along this roadway was severely damaged following the passage of Hurricane Dean in 2007, resulting in the roadway being undermined. The project involves the Rock Revetment, the construction of a retaining wall along a section of the corridor and the rehabilitation of 10,000 square metres of roadway. The project which commenced in August 2008 is being executed by Alcar Construction and Haulage Ltd who have given the commitment that the project will be completed by March 2009.

SPANISH TOWN TO BOG WALK GORGE - ST. CATHERINE RESTORATIVE AND REHABILITATIVE WORKS

A J\$79.5 million dollar rehabilitation programme is being undertaken along the Bog Walk Gorge in St. Catherine. The gorge has been severely affected by a series of storm events over recent years. The project which is aimed at stemming the perennial problem of damage to the gorge after storms or heavy rainfall involves road rehabilitation works, and the placing of concrete pavements along sections of the gorge. The concrete works to be completed include the construction of parapet and head walls. It also involves the underpinning of Random Rubble walls (in the Bog Walk Gorge) and the construction of a 'U' Drain (at Angels).

The project which began in August 2008 received a major setback with the passage of tropical storm Gustav. The construction company Bouygues Travaux Publics volunteered to complete the concrete pavement and to also carry out other repair works for half their current rates.

The contractors Solid Engineering was originally awarded a contract to carry out these works. They are however still obliged to complete the other works in the contract.

OLD HARBOUR BAY TO BARTONS - ST. CATHERINE RR WALLS AND DRAINAGE WORKS

The NWA is currently undertaking a major restorative effort along the Old Harbour to Bartons corridor in St. Catherine. This project involves the construction of Random Rubble walls along sections of the corridor and the cleaning of a large drain in Old Harbour Bay. The project is being completed at a cost of approximately J\$17.3 million by contracting firm, Strathairn Construction Co. Ltd. The project began in August 2008 and is expected to be completed by March 2009.



Sea Defence work underway - Roselle

cont from page 10

YALLAHS RIVER TRAINING, YALLAHS - ST. THOMAS

RIVER TRAINING AND BUNDING WORKS

The Yallahs Ford in St. Thomas was severely affected by Hurricane Dean in 2007. In a bid to restore the area, the Government immediately, through the NWA, began construction of a new bridge. River training to protect the abutment and the piers of the bridge was included in the works. This phase of the project which is valued at approximately J\$37.2 million began in August 2008 but was suspended following the passage of tropical storm Gustav which eroded all the work which was done prior to the storm. The project is currently on hold due to high water levels and will resume as soon as the water has subsided.



Incomplete River Training - Yallahs

GEORGIA - ST. THOMAS

LAUNCHING OF TWO BAILEY BRIDGES, RIVER TRAINING AND GABION WORKS

The NWA has embarked on a J\$69.9 million programme to restore sections of the Georgia roadway in St. Thomas. The roadway was damaged during the 2007 Hurricane Season, making it unsatisfactory for use by the traveling public.

The Hurricane Season brought massive flooding and soil erosion as well as the destruction of two Fords in the district of Georgia located in north eastern section of the parish. The project involves the launching of two Bailey Bridges and river training works. High water levels in the river channel prevented the start of the project scheduled for August 18. Surrey Paving and Aggregates Limited has been contracted to carry out these works which commenced in October 2008.



River Training Works in progress - Georgia

NEW ROUND OF PATCHING BEING UNDERTAKEN

The National Works Agency has embarked on another round of island-wide hot mix patching. The programme started on a small scale in November, but has been ramped up since December. The intensification of the patching programme coincides with the ending of the Atlantic Hurricane Season in November. Not much patching activities took place during the rainy months of August to November, based on a policy decision, which was taken to allow for an increased likelihood of the roads lasting longer. This as the rains have wreaked havoc on the island-wide road network over the last six years.

As part of the new programme, two separate allocations of US\$2M and US\$3M have been made available for this purpose. Minor drainage improvement will be undertaken, where necessary before patching in relation to the US\$2M allocation. Parish Managers have been instructed to have the works procured with the use of the emergency procedures. The NWA on the other hand has made arrangements to supply the Asphaltic Concrete Mix and emulsion to the contractors.

Mr. Triston Tulloch will coordinate the supply of hot mix and emulsion. As part of the Agency's quality control and management of

the programme, Parish Managers expected to advise the hot mix suppliers of the contractors, truck numbers and the amount of each daily request of asphalt mix.

Patching of rutted sections are expected to be done at a depth of 37 mm. Patches will be tested as part of the quality control strategy being employed by the Agency.

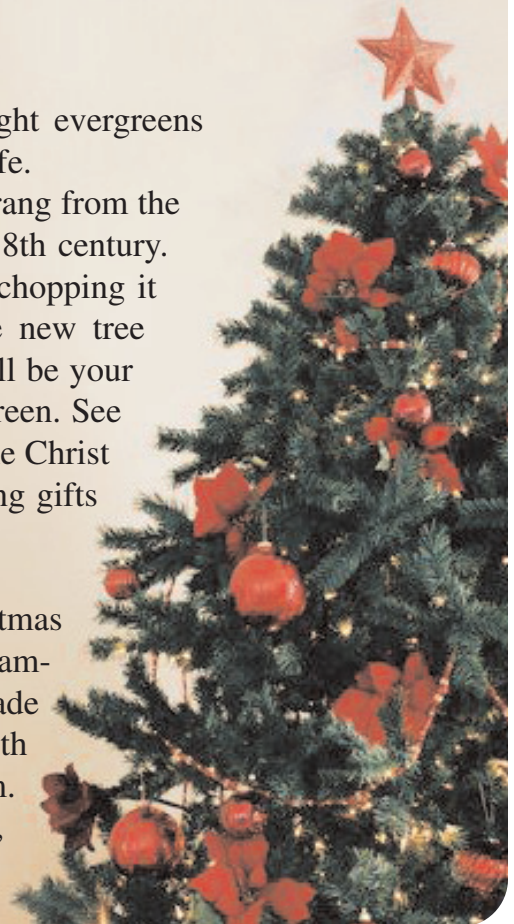


The Christmas Tree

Centuries before Christ, people who worshipped nature brought evergreens into their homes during festival time as a proof of continuing life.

Legend has it, the first Christmas tree was an evergreen that sprang from the center of an oak cut down by St. Boniface in Germany in the 8th century. The oak was sacred to the pagan religion practiced then, and chopping it down symbolized that the old beliefs were no more. As the new tree reached up to the sky, St. Boniface told the crowd: "This... shall be your Holy Tree. It is the sign of endless life, for its leaves are evergreen. See how it points toward the heaven. Let this be called the tree of the Christ Child; gather about it in your homes and surround it with loving gifts and rites of kindness."

However, it wasn't until the early 17th century that the Christmas tree really became a part of the holiday celebration. European families brought it into their homes and decorated it with homemade ornaments, such as paper roses, candies and cookies, and with candles, which represented the stars in the sky over Bethlehem. Later, as immigrants came to America from all over Europe, these beautiful traditions came with them.



Flashback - 2008



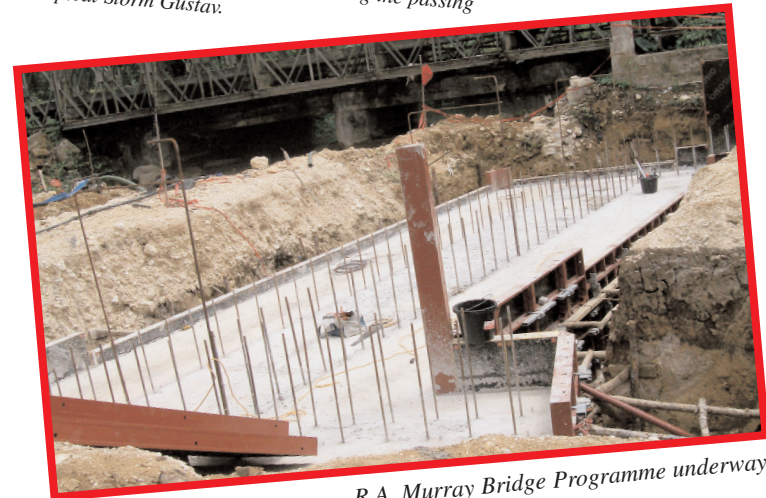
Rock Rivetment (wall) being constructed along the palisades strip to assist in mitigating the effects of hit tide and wind.



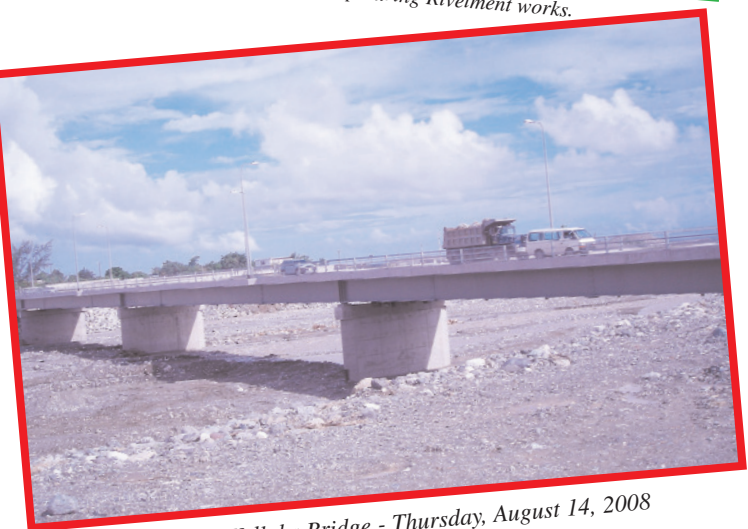
Team Spirit indeed - Members of the IT Department went to the aid of one of their co-workers during the passing of Tropical Storm Gustav.



Directors on tour of the Palisades strip during Rivetment works.



R.A. Murray Bridge Programme underway



Completed Yallahs Bridge - Thursday, August 14, 2008



Tropical Storm Gustav - August 28, 2008

JOKES

Ha HA Ha!



Christmas Cookie Treats!



XMAS BUTTER COOKIES

1 lb butter
 1 1/2 tps lemon juice
 6 egg yolks
 6 cups flour
 1 tsp baking powder
 1/2 pint of whole cream
 1 cup sugar
 1/2 tsp fresh lemon rind
 1/2 teaspoon salt
 add a additional little bit cream

Add flour, baking powder, salt, and

butter- need like pie dough- make a whole in center of dough so that the middle of the bottom of the bowl shows through.

Add sugar, egg yolks, lemon juice, cream and rind.

Knead till blended.

Divide dough into 4 balls and place in fridge and chill for a few hours.

Roll out dough and use cookie cutters.

Bake at 325°F for about 15 minutes.

CHRISTMAS GINGERBREAD COOKIES

1/4 cup milk
 1 tsp ginger
 1/2 tsp nutmeg
 1/4 tsp vanilla
 3/4 tsp baking soda
 1/2 cup stick margarine, melted
 1/4 tsp lemon juice
 1/2 cup molasses
 2 cups flour
 1/2 cup brown sugar
 1/2 tsp cinnamon

Sift together flour, baking soda, and spices; set aside.

In another bowl combine melted margarine and brown sugar together

until well combined. Add milk, molasses, vanilla and lemon juice.

Add flour mixture. Mix well.

Let chill in fridge for about an hour. Preheat oven to 350°F.

Take cookie dough out of fridge, roll and shape into various shapes and decorate with sprinkles or chocolate chips for eyes, mouth, and buttons if desired.

Transfer cookie shapes to ungreased cookie sheet and bake for 9-10 minutes.

Eat right hot of the oven or transfer to wire racks to cool.

CHEWY COCONUT BARS - CHRISTMAS RECIPE (SUGAR FREE)

1/4 teaspoon maple flavoring
 1/2 cup all purpose flour
 1 cup unsweetened coconut finely chopped
 2 eggs
 1/2 cup margarine melted
 1 t vanilla
 1 teaspoon baking powder
 1/2 c. chopped pecans
 7 1/4 teaspoon Equal

1/4 teaspoon salt

Beat Equal, eggs, and maple flavoring mix in vanilla and margarine.

Combine flour baking powder and salt stir into egg mix.

Mix in pecans and coconut.

Spread in an 8-inch pan bake for 18-20 minutes at 350° F.

<http://christmas-cookies.christmas-presents-ideas.com/chocolate-chip-cookie-recipe.html>

Team NWA
let your voice be heard!

We welcome your

articles, poems,

inspirations, quotes, etc

send to: susanwebb@nwa.gov.jm