

ROADSTER



Volume 10, Issue 30
September 2013

A Publication of the Communication
and Customer Services Department

“Paving the Way”

Billion Dollar Westmoreland Bridge Completed - St. Mary Communities Reconnected



See related story on page 3

Jamaica's South Coast
poised for development
... pg 5

Heightened level of Preparedness
for the 2013 Atlantic Hurricane
Season in the West... pg 8

Waging War against the
bush on St. Ann roads
... pg 14

On the roads with Minister Azan and NWA CEO



CEO, E.G. Hunter taking a first walk across the Halls Green Bailey Bridge in St. Andrew. The bridge was erected by the Agency with support from the Kingston and St. Andrew Corporation (KSAC)



Hon Azan on a tour of the Ramble Bridge in St. Thomas. The Minister visited following reports of a man falling to his death from the structure. The police have ruled the death as suicide. At left is Director of Regional Implementation and Special Projects, Varden Downer and Director of Technical Services, Roger Smith (right)



Minister Azan getting a first hand look at the Box Culvert recently completed at Robins Bay, St. Mary



Minister Azan looking at the progress of work at the Kintyre Bridge. Also in the picture are Members of Parliament, Damion Crawford for East Rural, St. Andrew (centre) and Andre Hylton for Eastern St. Andrew

Westmoreland Bridge Completed, Officially Opened and Irrefutably Welcomed



Minister of Transport, Works and Housing, Dr. the Hon. Omar Davies prepares to cut the ribbon to officially mark the opening of the Westmoreland Bridge. He is flanked by Member of Parliament for Central St. Mary and Minister without Portfolio with responsibility for Housing in the Ministry of Transport Works and Housing, Hon. Dr. Morais Guy (right); and Mayor of Port Maria, Mr. Levan Freeman (left – partially hidden), while scores of residents and stakeholders looked on.

There was an air of festivity, on August 27, as Ministers of Government, other elected officials; representatives of the National Works Agency (NWA) and China Harbour Engineering Company (CHEC); residents of over nine communities; and curious onlookers gathered for the official opening ceremony for the Westmoreland Bridge. The bridge, which had been the subject of many comedic and quizzical reviews because it bears the name for one parish while located in another, was touted about as the missing link to many communities in St. Mary.

Washed away in 2008, the former Westmoreland Bridge, had been an issue of much distress and displacement for many residents and travellers alike, who bemoaned having to travel many kilometres more than was necessary to access the towns and communities from Highgate to Lewis Store, which were just a few kilometres away from the bridge location. Now, at last, a new structure has been erected, which once again provides easy access to these communities and facilitated the easier movement of goods and services within areas such as Chovey and its environs.

The new Westmoreland Bridge was constructed under the now defunct Jamaica Development Infrastructure Programme (JDIP), at a cost of

US\$13,486,561.83. It is said to be one of the longest bridges in the country at a length of 180 metres, with 260 metres of approach roads. It is a steel and reinforced concrete bridge, boasting a pavement of hot mix concrete on top of a new base and embankment fill that is designed to last 100 years. It has metal rails, two driving lanes and sidewalks for pedestrians.

Happy would not be enough to describe the wealth of emotions that pervaded the gathering. There was singing, dancing, abundant laughter, and even playful camaraderie among politicians of opposing parties. So pervasive was the celebration that the merciless sun and subsequent threat of rain was not enough to scatter the ever growing crowd.

There is no doubt that this new structure was welcomed. Motorists and pedestrians alike continuously voiced their gratitude that 'their bridge' was replaced. "A major investment in the community" as aptly stated by Dr. the Hon. Omar Davies, Minister of Transport, Works and Housing. Residents know their plight was recognized, and now remedied, and anticipate much more as a result of this investment and others of this kind in their community.



A view of the Westmoreland Bridge from the Western Approach.

More work for the Crooked River Community



U-drain under construction

Following closely on the completion of a Box Culvert in the community of Crooked River, Clarendon is getting even more infrastructural assistance through the National Works Agency. Just under 10 million dollars are now being spent in the community to carry out work including patching, bushing, base rehabilitation as well as the construction and cleaning of drains. The project is being carried out by an NWA Force Account Team.

This rehabilitative project along the Danks to Mears Bridge corridor impact the lives of hundreds of commuters daily especially students. Crooked River is located between the towns of Frankfield, Trout Hall and Chapleton. On completion, this roadway will provide more comfort to citizens, especially from Pennants, Colonel Ridge, Guinea Corn, James Hill, Kupius, Danks, Mears Bridge, Mount Zion and even as far away as May Pen.

The Principal of Clarendon College, Mr. David Wilson, in speaking to the Roadster stated that these repairs will provide some ease to the students travelling along this route. He remarked that he is waiting with high anticipation for the announcement of the total rehabilitation of the main road leading from Frankfield to May Pen. Thirty four year old, fast food restaurant owner, Paul Coleman reiterated that Crooked River needs a lot of things including good roads. Crooked River has suffered over the years during heavy showers and storms with breakaways, land slippages and poor road conditions.

The NWA is now in high preparation mode for the rehabilitation of the road from Sour Sop Turn to Danks. This project to be financed by the Organisation for International Development (OFID) is now in the procurement phase.

Through the Jamaica Development Infrastructure Programme (JDIP) the NWA recently completed the construction of a Box Culvert in the Crooked River community. The work became necessary as the roadway was constantly made impassable during periods of heavy rainfall in the area. The work was done at a cost of J\$9.7 M.

Jamaica's South Coast poised for development....

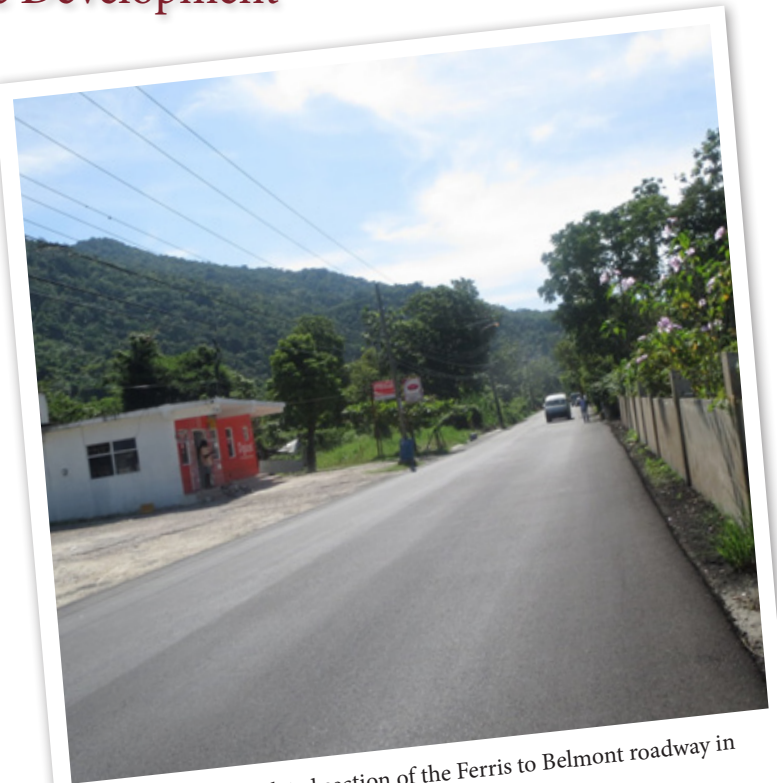
The Government's Investment in Road Infrastructure Expected to Facilitate Development

'Finally!' This is the overarching feeling of many road users who traverse the newly rehabilitated corridor between Ferris Cross and Belmont in Westmoreland. This long awaited road improvement project is now substantially complete, having had its genesis in August 2012 with the signing of a \$497 million dollar contract.

The corridor had been a bone of contention among residents and stake holders, who grew increasingly weary of the deteriorating road conditions along this critical corridor. The roadway not only serves the several communities within the Ferris Cross, Belmont and surrounding areas, it is also a critical link to the corporate area and also to the North Coast.

This recently completed project represents just one component of a billion dollar effort by the government to rehabilitate the entire 22.1 km stretch of roadway between Ferris Cross and Scotts Cove, which adjoins the neighbouring parish of St. Elizabeth.

The first phase of the project (Ferris Cross to Belmont), involved the rehabilitation of 8.4 km of roadway to include milling, regulating, resurfacing of roadway as well as the complete reconstruction of critical sections



A view of a completed section of the Ferris to Belmont roadway in Westmoreland.

of the thoroughfare. Additionally, the project involved the construction of several "U" drains, box culverts and kerbs and channel.

With this phase of the project now complete, the public now anxiously awaits the completion of the \$279 million dollar rehabilitation of the Belmont to Scotts Cove leg of the project. This project is currently in its infancy, having been put on hold in 2012 to facilitate the much needed replacement of defective National Water Commission (NWC) pipelines along 15 km of this roadway. These faulty pipes have been the source of many leaks, with the resultant undermining of the affected sections of the roadway. The National Works Agency (NWA) has forged a partnership with the NWC to install the new pipes.

This exercise is currently being undertaken by the NWA through funding from the NWC. The project is expected to be completed early 2014, following which the NWA will proceed with the rehabilitation of the corridor.

"With the South Coast now being poised for development, this investment in the road infrastructure is quite timely and will undoubtedly spur even further growth as good roads aid in driving development," said one business operator along the corridor. The Ferris Cross to Scotts Cove road improvement project is being funded through an agreement with the Inter-American Development Bank under the Transportation Infrastructure Rehabilitation Programme.



NWC Pipeline Replacement Project currently underway along the Belmont to Scotts Cove roadway.

Kintyre Bridge brings relief to hundreds

State Minister in charge of Works, Hon Richard Azan said he is exceedingly happy at being able to see the delivery of a bridge to the hundreds of people within the Kintyre community in St. Andrew. "It was a promise that was made and that promise has been kept!"

For many years the people of Kintyre in St. Andrew feared the start of the Atlantic Hurricane Season. In fact, just a mere mention of the months June to November drove fear into the heart of many, given the deadly experiences that they either have had or knew of, over the years. Access to the community was by way of a Ford that could not withstand the forces of nature and at times faced imminent threats of collapsing. Collapsed it did- at least sections on more than one occasion, leaving hundreds of people marooned. The last such event took place in September 2012, when heavy rains affecting the island left the Ford impassable. The concrete road could not manage the flood waters that divided it in two.

The Kintyre Ford was the major and most central route used by residents of Clarke Street, St. Joseph Road, Bedward Pastures, Cosmo Mews and Kintyre. It was with the residents in mind that the government through the National Works Agency sought to give the people some degree of mental comfort, through the construction of a bridge.

Following the destruction of the Ford, State Minister for Transport, Works and Housing, Hon Richard Azan, along with Members of Parliament, Andre Hylton and Damion Crawford and a Technical Team from the NWA, visited the area. The State Minister gave an assurance that the government would make a special effort to correct the longstanding issue of the Ford becoming impassable leading to severe difficulties for the people.

BUDGET

To this end, an amount of \$65 million was allocated for the erection of a Bailey Bridge that was procured under the Jamaica Development Infrastructure Programme (JDIP). Construction of the new Modular Bridge began in late December 2012 and was expected to be completed within four months, or by the end of April 2013. However, the project took several additional weeks to be completed, owing to the tardiness of utility companies in removing what were impediments. The project cost was however not impacted financially.

SCOPE OF WORKS

Works on this project included:

- Construction of abutments;
- Assembly and launch of a Double Span Chinese Modular Bridge;
- Construction of Gabion Walls and Rock Retment;
- Construction of a reinforced concrete Pier in the channel to support the bridge structure;
- Construction of approach roads.



Kintyre Bridge from the Western Approach

Help is on the way.....

Plans in High Gear to rehabilitate the Shettlewood to Chester Castle Main Road, Westmoreland.



A badly rutted section of the Shettlewood to Chester Castle main road in Hanover

"We want road!" This was the ardent cry from the throng of demonstrators who recently gathered to mount a demonstration along sections of the Shettlewood to Chester Castle main road in Eastern Hanover. These residents had grown exasperated with the poor condition of this critical section of roadway.

The main road from Shettlewood Chester Castle forms part of the North South link, which provides access to the city of Montego Bay, St. James for commuters travelling from the neighbouring communities of Bethel Town, in Westmoreland and New Market in St. Elizabeth.

These residents, who had long voiced their concern over the condition of this roadway, received a glimmer of hope in September with the National Works Agency's announcement that plans were in high gear to have this corridor rehabilitated.

Currently the details of the project are now being finalized, with the contract now in the procurement phase.

The project which is expected to get underway before the end of the year involves the patching and local rehabilitation of critical sections of the roadway; the bushing of verges, trimming of overhanging trees, and the cleaning of critical drains. This project will be executed through the Road Maintenance Fund's Routine Maintenance Programme.

Commuters are indeed happy with this latest drive by the NWA and anxiously await the commencement of this project. "I can't wait for this work to be done. The road really want some attention man!" one motorists told the Roadster. Once complete, the project will serve to increase the ease and safety with which road users traverse this corridor.

Heightened level of Preparedness for the 2013 Atlantic Hurricane Season in the West

The country is now in the heart of the 2013 Atlantic Hurricane Season which runs from June 1 – November 30. Traditionally, the months of August and September represent the most active period for Jamaica. This is evidenced in the numerous hurricanes and tropical storms which have ravaged the island over the years during this period. Hurricane Gilbert (September 1988), Hurricane Ivan (September 2004) and Tropical Storm Gustav (August 2008), readily come to mind.

It is against this background that the Office of Disaster Preparedness and Emergency Management appealed to Jamaicans early this year in August, to increase their disaster preparedness activities during this critical time.

Recognizing this, the NWA also heightened its disaster preparedness machinery in August throughout the western parishes of St. James, Westmoreland, Trelawny and Hanover. Twelve (12) million dollars were spent on this programme. The programme, which is now substantially complete, augments an earlier effort in June to clean several critical drains in the Region.

Among the drains which have been targeted are the North Gully in St. James; drains along the Dump roadway in Westmoreland; the Cotton Tree drain in Trelawny; and the Chester Castle Gully in Hanover.

This programme formed part of the NWA's \$85 Million Mitigation Programme for the island and complements several major drainage improvement projects which have been undertaken in the Region to date, through the Jamaica Development Infrastructure Programme (JDIP) and the Jamaica Emergency Employment Programme (JEEP).



A view of a section of the Barnett to Adelphi roadway in St. James which was cleared of vegetation under the NWA's Mitigation Programme.



Green Town, Trelawny - This drain was recently cleaned under the NWA's Emergency Mitigation Programme.

The NWA Completes Four Road Rehabilitation Projects in Southern Trelawny

In the past, travelling through sections of Southern Trelawny such as Wait-A-Bit, Joe Hut, Clarkes Town, and New Hope, proved to be a quite daunting task. This was due to the poor condition of these roadways which were heavily rutted and in some cases severely undermined. The situation was particularly difficult for farmers, in these areas, where farming is the bread and butter of most locals. Transporting their produce from their farms to their intended markets was challenging.

Today, motorists are travelling with much more safety and ease as the National Works Agency has completed four major projects in Southern Trelawny, resulting in a total of six major road rehabilitation projects which have been completed in the parish under the Jamaica Development Infrastructure Programme (JDIP), at a total cost of approximately \$ 182 million.

The Martha Brae to Peru and Martha Brae to Kinloss projects were the first two JDIP projects to be completed. These projects are located in the Northern end of the parish and were completed in 2012. More recently, the NWA, in 2013, completed work on the German Town roadway; the stretch of roadway between Wait-A-Bit and Joe Hut; the Clarkes Town to Hyde corridor; and the roadway between New Hope and Lodge.

In June 2013 full access was restored to the German Town roadway. The roadway was previously closed to vehicular traffic, following successive storm events, which severely undermined a section of the roadway. This situation made it dangerous for motorists to make their way along the corridor, hence the NWA's decision to close the road. The project involved the construction of a retaining wall, the improvement of the drainage system in the area and the restoration of the road surface of the roadway.

The Wait-A-Bit, Clark's Town and New Hope projects involved extensive drainage improvement, the construction of retaining walls, and reshaping and resurfacing. Residents have given their stamp of approval on these projects, which have greatly improved the quality of life in these areas.



A section of the Wait-A-Bit to Joe Hut roadway where a Gabion retaining wall was constructed.



A view of a section of the German Town roadway which was recently reopened to motorists.

Roads around School Zones in Mandeville improved through Special Programme



Patching being undertaken along the corridor from Mandeville to Rudds Corner

With the 2013/14 school year starting in September, the National Works Agency's team in the Central Region sought to improve the condition of several corridors leading to learning institutions in and around the town of Mandeville, Manchester.

There are several institutions located in and around the town. These institutions include Beaumont Comprehensive College, Belair High School, Bishop Gibson High School, De Cateret College, El Instituto de Mandevilla, Manchester High School, New Green Primary School, Mandeville Primary School and Hatfield Junior High School.

The project which involved mostly patching was undertaken by a NWA Force Account Team who carried out 2,050 square metres of road work. The roads that were patched included: Perth road (Manchester High); Clifton to Cedar Grove (Decateret College and Belair High Schools); Newleigh Road (Bishop Gibson High School, El Instituto de

Mandevilla); Woodlawn Road; Mandeville to Rudd's Corner (Church Teachers College and Northern Caribbean University); and Greenvale to Spur Tree (Hatfield Junior High). These works were aided by Road Maintenance Fund (RMF) funded Patching-Project which was completed by mid-September.

Former Mayor of Mandeville, Councillor Desmond Harrison, who spoke with the Roadster said that the targeting of the corridors was an excellent idea. He stated that there were other schools in Manchester that could be considered. He suggested the Limit to Spalding roadway which would facilitate commuters, especially students of Holmwood Technical High School, Knox College and Christiana High School.

In the meantime, works under the RMF funded Micro Surfacing Routine Maintenance Programme has been completed on Main Street and Hargreaves Road, as well as Park Circle, in the Mandeville Town Centre.

**The project which
involved mostly patching
was undertaken by a
NWA Force Account
Team**



Waltham Park Road



Waltham Park Road

Patching Completed along several Roadways in Kingston and St. Andrew

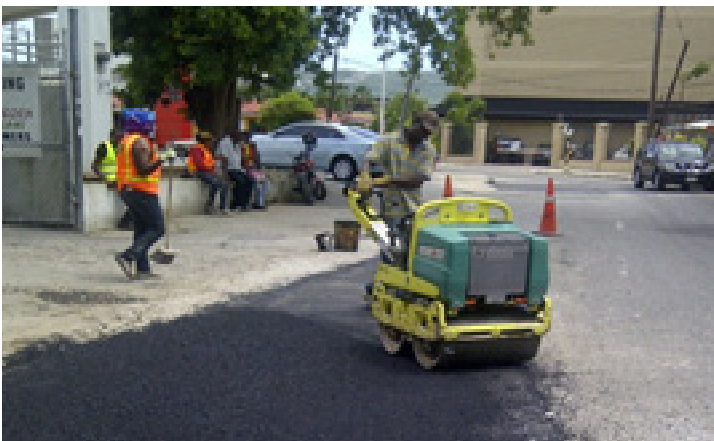
As we may all be aware, fiscal constraints have hampered the government's ability to accommodate necessary infrastructure maintenance. The repair of potholes and other damaged areas continue to pose a challenge for the National Works Agency. Despite these challenges, every effort must be made to maintain the major access roads. This is so, because once a pothole develops it will continue to expand and erode the roadway during the passage of vehicular traffic or heavy rainfall. Patching potholes is absolutely essential in preventing the virtual destruction of roadways.

It is for this reason that the patching of major corridors in the Kingston and St. Andrew region has been carried out. Ten roadways were identified. They were the Mandela Highway, Hagley Park Road, Constant Spring Road, Maxfield Avenue, Lyndhurst Road, Waltham Park Road, Beckford Street, Dominica Drive, Oxford Road and Glenmore Road.

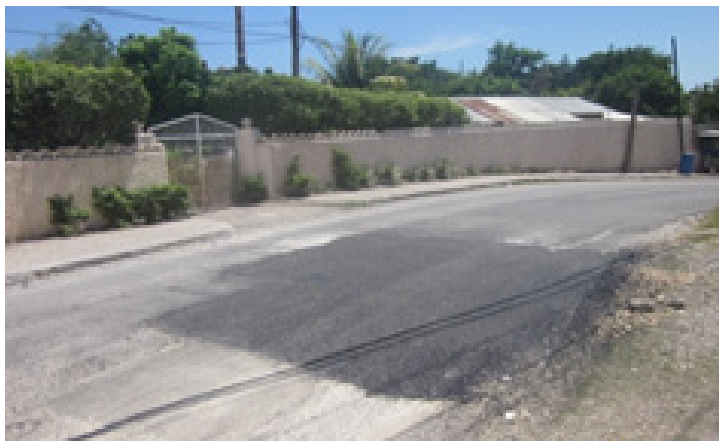
Approximately 1200 metres square of hot mix patching was carried out during a period of four weeks. The project cost \$5 million and was undertaken by one of the Agency's Force Account patching crews.

This work complimented the Agency's Spray Patching activities that were undertaken over the last three (3) months. Over 5,000 square metres of roads were patched through this effort.

Among the corridors that benefitted under this Road Maintenance Fund (RMF) financed effort were Molynees Road, Spanish Town Road, Half Way Tree Road, Constant Spring Road and Oxford Road.



Dominica Drive



Cassia Park Avenue

Black River Seawall nearing completion

Steady progress has been made by the NWA in completing 70 metres of sea wall in St. Elizabeth's capital, Black River. The project which became necessary as a result of significant damage to the wall, resulting from several storm events started in June 2012 and was 90% complete at the end of September. It is expected to be completed by the end of October 2013.

The scope of works for the over 31 million dollar project include repair to the sidewalk and road embankment,

construction of 70 metres of random rubble wall, installation of guardrails and the paving of the reinstated area of roadway with Asphaltic Concrete.

The Black River Sea Wall is located along the Luana to Scotts Cove control section. It is the main route to the Court House, Parish Council, NWA's Office, Parish Library, Examination Depot, Black River High School the hospital and the historic Waterloo Guest House. This wall which serves as a buffer between the road and the sea was first constructed years ago.



Black River Sea wall under construction

Retaining Wall to Reconnect the Nedhut Community

The community of Nedhut is a hamlet nestled deep in the foothills of Dallas Mountain, east rural, St. Andrew. The cul-de-sac leading to the community is a parochial road that was cut off from the Dallas Mountain main road in 2008 during the passage of Hurricane Gustav, the most destructive event of that year's Atlantic Hurricane Season. There was additional damage to the roadway in 2010 during the short lived Tropical Storm Nicole.

Motoring residents, over the period of disrepair were forced to park along the Dallas main road from where they trek daily, rain or shine, night and day, to the comfort of their homes tucked away beyond the treacherous terrain. Each has had to face this ordeal daily, during the past several years. The breakaway was so massive in sections that, it was difficult for two adults to pass along the narrow ledge comfortably. Not daunted by the circumstances many of these residents displayed the confidence that one day these difficulties would be a thing of the past. Many would tell you that, "the Lord helps those who help themselves". They got together and used old tyres to create a 'roadway' that was wider and safer than what was bequeathed to them by Gustav and Nicole.

The appeals of residents to the NWA have had the desired response. In mid-August 2013 construction of Gabion baskets began at the approximately twenty seven metres in length breakaway. These baskets are being used to control erosion and retain the fill that will be used to replace the pavement that was lost. After six weeks of activities considerable progress has been made. The project has been hampered by continuous rainfall in the area. Despite the challenges, it is expected that this project will be completed within another three months.

Before long residents will be able to access their community in the manner that they were accustomed to prior, to the untimely, maybe even unwelcome visit of Gustav and Nicole.



Break-a-way at Nedhut. Residents are forced to use the narrow track (right) in order to access their homes



The placement of Gabion baskets commencing reconstruction of the road in Nedhut, St. Andrew



A drain along the Moneague to Green Park main road, St. Ann, before and after being cleaned

Waging War against the Bush on St. Ann Roads

Motorists should have a clearer view while travelling on over thirty roadways in the parish of St. Ann. This is possible as during the month of September 2013 there was a major de-bushing and drain cleaning programme, which sought to address overgrown trees and shrubbery which had made it difficult to traverse these roadways. The effort which was part of an Islandwide Routine Maintenance Emergency Mitigation Programme, saw approximately 34.5 kilometres of roadway across St. Ann cleared of bushes and overhang. In addition, approximately 92 cubic metres of drains were cleaned, also in an effort to mitigate flooding, associated with flood rains.

This type of mitigation programme is usually implemented periodically, as necessary, and this particular programme came about at a time when complaints were mounting about overgrown shrubbery along major thoroughfares in the parish. For many months prior to this clean-up, persons had voiced concern about their safety while travelling, especially on roads that are unlit or, at most, poorly lit. The issues were further compounded by sparse but intermittent rainfall which contributed to the undergrowth, which further blocked drains and reduced the visibility of road users.

The programme which was implemented in early September and lasted approximately four weeks, was done at a cost of over \$3.67 million.



The Dry Harbour to Bamboo road, St. Ann after bushing works

The Legal Services Unit – looking out for the NWA's interest.. protecting your investments

"Man perfected by society is the best of all animals; he is the most terrible of all when he lives without law, and without justice." Aristotle

The National Works Agency (NWA) being a creature of the law, having been established through the Executive Agency's Act, subscribe to this view, as stated by Aristotle. The Agency's subscription to the view is manifested through the services provided by the Legal Services Unit with a team of four dedicated professionals. The two main responsibilities of the Unit are:

1. To ensure that all legal transactions are executed and all legal issues determined in keeping with the Laws of Jamaica and the policies of the NWA; and
2. To provide a working legal guide to all internal Departments of the NWA as it relates to, or impacts the functions they invariably perform.

To satisfy these broad goals the Unit performs a number of functions. These include:

1. Advising the Agency on its statutory responsibilities and functions.
2. Conducting research and providing opinions on matters concerning the Agency, both internally and externally.
3. Conducting Land Acquisitions.
4. Providing Contract vetting and drafting services.
5. Handling claims relating to property damage, personal injury, and damage to street furniture (traffic lights, bridges, etc.).
6. Referring matters to the Attorney General's Chambers for advice, and where necessary, for the commencement of court proceedings.

The Unit is headed by Brandie Anderson who is supported by Legal Officer Kimone Tennant, Legal Assistant, Kemar Wilson and Para-legal Clerk, Robert Dicks.



BRANDIE ANDERSON- LEGAL MANAGER

Brandie Anderson hails from the city of Montego Bay in the parish of Saint James. She is a past student of the Mount Alvernia High School, the Westwood

High School for girls and the Montego Bay Community College.

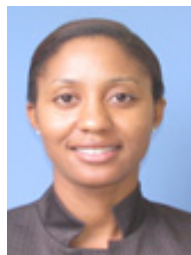
At the end of her education journey at the Montego Bay Community College, Ms. Anderson was accepted directly into the University of the West Indies where she obtained a Bachelor of Law Degree, with Honours. Thereafter, she obtained a Legal Education Certificate from the Norman Manley Law School and was admitted to practice law in Jamaica in 2002. In addition, she has completed various professional training including a Certificate in Mediation at the Dispute Resolution Foundation; and Procurement Law Intensive Course.

After leaving the Norman Manley Law School, she worked as an Associate Attorney in the firm of Raphael Codlin & Company. Then, with less than a year in practice she set a Jamaican record of being the only Jamaican to appear in eight (8) cases in the United Kingdom Privy Council, with Mr. Raphael Codlin on behalf of the firm.

Ms. Anderson has been involved in civil litigation. Her primary areas of practice were in contract law, the recovery of debt, company law, sales, division and transfer of property, administration of estates, divorce and other matrimonial related proceedings.

She has also lectured Law at the Montego Bay Community College and the Para-legal Training Institute. Miss Anderson also worked at the National Land Agency (NLA). While at NLA Miss Anderson was employed as a Legal Officer in the Corporate Legal Services Division in several specialized areas including General Legal Services, Land Settlement Unit, Highway 2000 Project and the Probate Unit.

Ms. Anderson joined the NWA on June 1, 2012 in the capacity of Manager, Legal Services. In the role of Legal Services Manager Miss Anderson has responsibility for the Legal Services Unit and is at the helm of providing legal advice and solutions to the Agency on a wide range of issues.



KIMONE TENNANT- LEGAL OFFICER

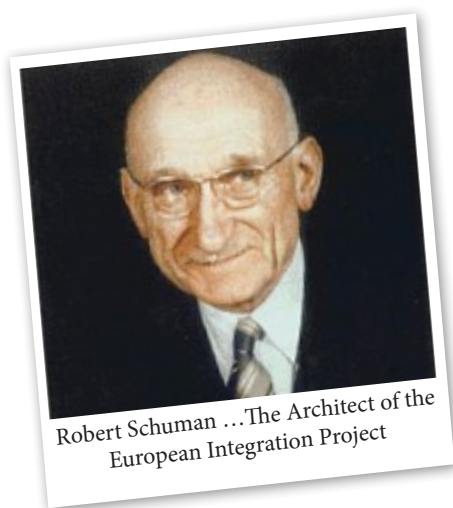
Kimone A. Tennant was called to the Bar of England and Wales in 2007, and

The Agualta Vale Roundabout in St. Mary renamed: The Robert Schuman Roundabout

The Agualta Vale Roundabout, in Agualta Vale St Mary, was constructed in 2008, as part of major road improvement works undertaken in St. Mary, under Segment 3 of the Northern Coastal Highway Improvement Project (NCHIP). This project was implemented and completed by the Government of Jamaica, through funding from the European Union and covered 96 kilometres of roadway from Ocho Rios in St. Ann, to Port Antonio in Portland.

In recognition of the valuable assistance extended by the European Union (EU) to Jamaica and as a token of appreciation by the Government of Jamaica, to the EU, the Agualta Vale Roundabout has been renamed the Robert Schuman Roundabout.

Of course, the burning question may be: "Who is Robert Schuman?" Here is what the European Union has to say about Robert Schuman.



Robert Schuman ...The Architect of the European Integration Project

Robert Schuman (1886-1963) is regarded as one of the founding fathers of the European Union. Twice Prime Minister of France, a reformist Minister of Finance and a Foreign Minister, he was instrumental in building post-war European and trans-Atlantic institutions. An internationalist by experience and conviction, Schuman was a visionary and a realist. His speeches and writings have had a lasting influence on European integration.

His convictions are well represented in the so-called 'Schuman Declaration' of 9th May 1950 in Paris, a date that we still celebrate as European Union Day. In this declaration, he proposed to Germany and the rest of the European countries to work together towards a merger of their economic interests.

In his Declaration, Robert Schuman particularly proposed the joint control through a supranational authority of coal and steel production, the most important materials for the armaments industry. The basic idea was that whoever did not have control over coal and steel production would not be able to fight a war. This cooperation was to be designed in such a way as to create common interests between European countries which would lead to gradual political integration, a condition for the pacification of relations between them. His conviction was that in an economically united Europe, war would become 'not merely unthinkable, but materially impossible'.

Within one year, on 18th April 1951, the six founding members of the European Union: Germany, France, Netherlands, Belgium, Italy and Luxembourg signed the Treaty of Paris, which created the European Coal and Steel Community - Europe's first supranational Community. This ground-breaking organisation paved the way for the European Economic Community, the nuclear non-proliferation Community (Euratom), and finally the European Union as it is known today.

The supranational structure that Robert Schuman envisioned in his Declaration has been the foundation of the peace that has been lasting between the Member States of the European Union since World War II, and which contributed to the prosperous economic and social development of their citizens, today totalling over half a billion people.



Picture of the new sign indicating the Robert Schuman Roundabout in Agualta Vale, St Mary.



From Left to Right: At the podium - Chairperson, Mrs Audrey Sewell, JP, Permanent Secretary in the Ministry of Transport, Works and Housing (MTW&H), giving the opening speech at the Official Ceremony to mark the Renaming of the Agualta Vale Roundabout, to the Robert Schuman Roundabout; Seated at the Head Table - Honourable Robert Pottinger, former Custos Rotolorum of St Mary; Her Excellency Paola Amadei, Ambassador/ Head of Delegation of the European Union, Jamaica; Dr the Honourable Omar Davies, MP, Minister of MTW&H; Senator the Honourable Arnold J. Nicholson, QC, Minister of Foreign Affairs and Foreign Trade; His Worship, Councillor Levan Freeman, Mayor of Port Maria; Mr Karl Samuda, MP, Opposition Spokesman for Works in the MTW&H; Mr Charles Johnston, Chairman, Jamaica Producers Limited.

In honour of his pioneering work towards a united Europe, the district housing the headquarters of several European Union institutions in Brussels is named after him along with a major roundabout bearing his name located at the heart of the Schuman District.

(Submitted: Representatives of the European Union, Jamaica)

Here in Jamaica, The Robert Schuman Roundabout, in Agualta Vale, St Mary, located approximately midway en route Ocho Rios to Port Antonio, now bears the identifier shown on previous page.

RENAMING CEREMONY

On Tuesday, May 9, 2013, an official Ceremony to mark the renaming of the Agualta Vale Roundabout, to the Robert Schuman Roundabout, was held at the Roundabout in Agualta Vale, St Mary.

A Commemorative Plaque, erected within the Roundabout, was also unveiled at that time, by the Minister of Transport, Works and Housing, Dr the Honourable Omar Davies, MP.



Delegates from the European Union, Jamaica, at the Official Ceremony to mark the Renaming of the Agualta Vale Roundabout, in Agualta Vale, St Mary, to the Robert Shuman Roundabout.



The Commemorative Plaque, erected within the Roundabout, was unveiled by the Minister of Transport, Works and Housing, Dr the Honourable Omar Davies, MP (2nd Right). Permanent Secretary, Mrs. Audrey Sewell (Right) also shared in the moment.

Legal Services Unit Continued from Page 15

subsequently admitted to practice in Jamaica in 2009. She has experience in Employment Law and civil litigation.

Ms. Tennant's professional affiliations include the Honourable Society of Lincoln's Inn and the Jamaica Bar Association. She holds a Bachelor of Science Degree from the University of the West Indies, and Master of Laws from City University in London, England.



SHANTI BADALOO **- LEGAL OFFICER**

Shanti Badaloo is the newest member of the Legal Services Unit having joined the Agency in October of this year.

Shanti graduated from the University of the West Indies and the University of Wolverhampton with a Bachelor of Arts Degree in Philosophy and Political Science and Bachelor of Laws Degree respectively, both with honours.

Shanti is the holder of a Legal Education Certificate from the Norman Manley Law School from which she graduated in 2010. In that year, she was also called to the Jamaican Bar.

Prior to joining the Legal Services Unit, Shanti spent three years at a private firm where her practice covered a range of commercial and real estate matters including building contracts, real estate development, company formation and the preparation and registration of mortgages.

Shanti has been trained in mediation. She is an avid reader

and has contributed to legal articles including the World Bank Publication "Women, Business and the Law". She also enjoys travelling, classical dance and black and white photography.



KEMAR WILSON **- LEGAL ASSISTANT**

Kemar O. Wilson's experiences spans several organizations including the Jamaica Defence Force, the Court of Appeal of Jamaica, the Office of Titles, the Electoral Office of Jamaica, the Ministry of Agriculture and Fisheries and the law

offices of Crafton Miller & Company and Williams, McKoy & Palmer. Mr. Wilson joined the Legal Services Unit at NWA, in the capacity of Legal Assistant, in August 2013.

He is a distinguished Wolmerian and a past student of the University of Technology, Jamaica where he read for and acquired a Bachelor of Laws Degree with honours. Kemar is also an aspiring Attorney-at-Law, with a knack for volunteering his time for charitable work.



ROBERT DICKS **- PARA-LEGAL CLERK**

Robert Dicks works in the Unit as the Para-Legal Clerk. He is the longest serving member of the Unit. Mr. Dicks has a wealth of knowledge about transactions dealing with the Registration of Titles Act. He is a good resource person and

assists with all matters within the Unit.

Enfield main road officially opened!

State Minister for Transport, Works, and Housing, Honourable Richard Azan cutting the ribbon jointly with a child from the community of Enfield, St. Mary. The Minister was on hand to officially reopen the rehabilitated road.

Sharing in the historic moment are (from left) NWA - CEO, E.G. Hunter; Member of Parliament for South-East St. Mary, Dr. Winston Green; Manager, Communication and Customer Services at the NWA, Stephen Shaw; Managing Director of Dwight's Construction, Benton Woodbine; and Project Manager, NWA, Edwin McCoy. The project was the last of a three stage approach by the NWA, valued at nearly \$200 million, to deal with severe infrastructural problems in the mostly farming village. A new bridge has been built, replacing the defective Dry River Bridge that was closed for some time. Additionally, significant river training work was also undertaken within two sections of the Dry River, where significant erosion had left a section of the road impassable and threatened several families in another.



On the roads with Minister Azan and NWA CEO

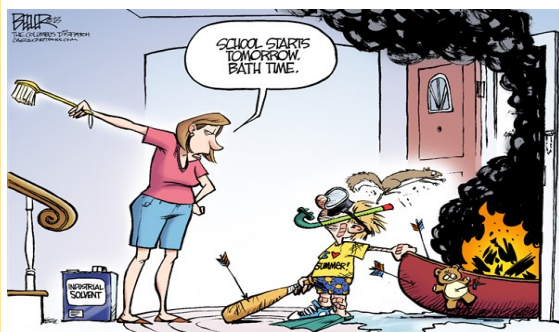
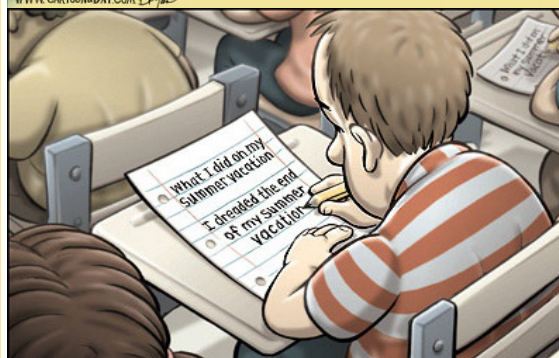


Minister Azan standing with NWA team members and City Engineer, at the KSAC, Norman Shand (right) on the Halls Green Bridge in St. Andrew.



Minister Azan testing the Kintyre Bridge during its construction

LveLove Laugh



Guava



Guava is a tropical fruit, cultivated mainly in the Asian countries. It is quite similar in shape to pear and has a rind that is green in color and changes to yellow when it becomes over-ripe. Inside the rind, which is consumed along with the fruit and not peeled, there is flesh that is either white or pinkish/reddish in color. More often than not, you can find lots of small hard seeds enveloping the soft and sweet pulp of the fruit. Guava is quite rich in Vitamin C, maybe even more than orange, apart from a number of other vitamins and minerals.

Health & Nutrition Benefits of Eating Guava

- Guava is a very good source of vitamins, fibers as well as minerals.
- Being rich in Vitamin C; guava is effective in treating male infertility caused by sperm clumping, adhesion and other abnormalities.
- Guava has been associated with healing of wounds, when applied externally.
- Guava has general haemostatic properties and can be used for treating bleeding nose, gums and minor internal hemorrhaging.
- Guava helps cure dysentery, by inhibiting microbial growth and removing extra mucus from the intestines.
- Guava helps the body in combating free radicals produced during metabolism and aids in preventing age-related chronic diseases, such as Alzheimer's, cataract and rheumatoid arthritis.
- Guava is one of the richest sources of dietary fiber and thus, is good for those suffering from constipation.
- Guava strengthens and tones up the digestive system and even disinfects the same.
- Guava, having high content of roughage, no cholesterol & less digestible carbohydrates, is good for those trying to lose weight.
- Guavas can improve the texture of skin and help avoid skin problems. For the purpose, you can either eat it raw or make wash your skin with a decoction of its immature fruits and leaves.
- Juice of raw and immature guavas or decoction of guava-leaves is known to bring relief in cough and cold.
- Researches have shown that guava is pretty effective in preventing cancer and even heart diseases in people.
- The presence of complex carbohydrates and dietary fibers in guava makes it effective in lowering cholesterol and blood sugar levels.
- The presence of Vitamin C and other phytonutrients, such as caretenoids, isoffavonoids and polyphenols, in guava has led to it being an effective antioxidant.

Read more: <http://www.unp.me/f150/benefits-of-guava-51600/#ixzz2ieQadx7Q>